

VILLAGE VOICE

BRINKLEY.....BURROUGH GREEN.....CARLTON.....WESTLEY WATERLESS

NOVEMBER 2022

WESTLEY WATERLESS POP UP PUB



FRIDAY 4th NOVEMBER
6pm - 10.30pm
Westley Waterless village hall

BULLS BRIDGE BARS and
THE COOK'S NEST, Supplying
delicious Greek Style food

Lots of Guy Fawkes fun, games and competitions.
All the details on www.westleywaterless.com

BURROUGH GREEN CHRISTMAS FAYRE



SATURDAY
26th NOVEMBER 2022
READING ROOM
11.00 - 15.00

There will be light lunch snacks, including homemade soups, cakes, pastries, tea and coffee, at very reasonable prices!!

A great place to get high quality home crafted, Christmas gifts and enjoy a chat and some lunch or afternoon tea with your friends and neighbours, and of course do some Christmas retail therapy!

Support the Burrough Green Reading Room

If you would like to have a table (£8) to sell craft, please email k.f.butcher@btinternet.com

DESIGNATED WARM HUB

Burrough Green Reading Room are pleased to announce that we have received grant funding to operate as a designated Warm Hub and will offer the community a warm and friendly place to meet, socialise and enjoy a free hot drink.

We will be open on Thursday afternoons from 3.30 - 5pm for families to meet after school (children must be accompanied by an adult!) and for coffee on Friday mornings 9.30 - 11.30.

This new initiative will begin on Thursday 3rd November and will be run by volunteers from the Reading Room Committee. We would love to hear from you if you would like to help - call 01638 508227 (Carla) or message us on the village Facebook page.

Please note the change of date

WINTER FAIR
SATURDAY 3rd DECEMBER

12noon to 2pm

BRINKLEY MEMORIAL HALL
Come along and have lunch of
homemade soups, sausage in a bun,
and delicious puddings.



Cake stall..... Gift stall

Bric-a-brac..... Tombola.....

Raffle.....& more



If you have items, cakes, gifts, bottles, nice bric-a-brac, etc (no books please), that you could donate to the fair, or can help run a stall, it would be much appreciated.

Please contact Trish on 01638 507495, or Ros on 01638 507240

Please support this fund-raising event for your village church, St Mary's, Brinkley.



BRINKLEY CHRISTMAS CARD

2022

Sign up and be part of our village Christmas card for 2022.

This year, your donations will be split between

St Mary's Church Brinkley, and
Newmarket Open Door.

It is your choice which to support: either or both charities. Don't get left out!

For further details and Gift Aid forms, please contact Ros on 01638 507240 or 07860 128270

The printing of the card is generally at the beginning of December, so please get in touch, if you wish to be included - by 2nd December.

Last year, we raised over £1400 for our charities.

MOBILE LIBRARY

The Mobile Library will be at BRINKLEY Memorial Hall on the 4th THURSDAY of each month between 12.10 - 12.50pm.



24th November.

BURROUGH GREEN by the BUS STOP on 3rd THURSDAY of each month at 3.50 - 4.10pm. 17th November

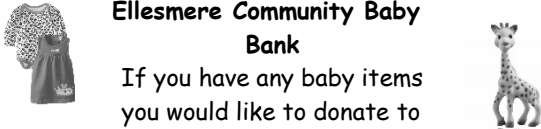
They stock a great selection of books for all ages, plus NHS hearing aid batteries. They can even check and replace the ferrules on walking sticks. Make use of this wonderful resource.



NEWS FROM THE ELLESMERE CENTRE

The Ellesmere Centre is aware that everyone will be feeling the pinch this winter so why not make the most of our special offers for this year.

Ellesmere Community Baby Bank



If you have any baby items you would like to donate to someone else please leave an A5 advert on the board provided at the Centre. Please state sex and age of child. Unfortunately, we have no storage so do not leave donations at the Centre.


Christmas Market



Please join us again this year for our wonderful Christmas market on 20th November 11am-3pm.

With over 20 stalls of local produce it's the perfect time to kick off your Christmas Shopping. Refreshments and Mulled wine available

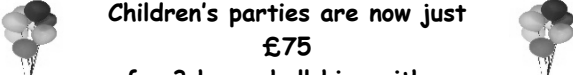
Evening Parties at The Ellesmere Centre



Whatever the occasion, Birthday, Anniversary or Family Get Together. Limited period only, book an evening party with 50+ guests, using our bar and pay NO Hall Hire.


Contact the office for availability or for more details.

Children's parties are now just £75



for 3 hours hall hire with a Bouncy Castle (limited period only)

Roller Skating is Back!




Tuesday afternoons from 3.30-5.30pm. £2 per child £1 to hire skates. Tuck Shop.

New Early Morning Exercise Group with Richard

Why not come and join us every Monday, Wednesday and Friday on the Astro at 6am or 6.30am. All levels of fitness welcome.

Moo Music is our new class for preschool children.



It takes place on Friday mornings. If you are interested please contact moomusicely@gmail.com

Follow us on Facebook or Twitter@CentreEllesmere
Email: office@ellesmerecentre.org.uk-alternatively call us on 01638 508212

BURROUGH GREEN READING ROOM

SAVE THE DATE

We are hosting a Christmas Village Breakfast on Sunday 11th December - save the date for a fun filled festive treat!

NOTICE FROM BURROUGH GREEN PARISH COUNCIL

We will be running an open 90 minutes in Burrough Green Reading Room to enable parishioners to come and discuss with Parish Council members any questions or issues they have about the village. Whilst there is always 15 minutes before the start of every Parish Council meeting set aside for questions from the community and we will continue to do so , we recognise that 6pm on a Monday night may not be convenient , especially as the nights draw in. We will initially run two sessions from 10 - 11.30am on

Saturday 12th November

Saturday 10th December

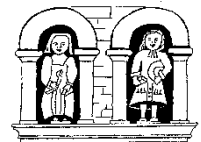
Please come anytime between 10-11.30am and we look forward to seeing you.

Subject to how this works we will plan more for the New Year.

If you need more information, please contact clerk@burroughgreenparishcouncil.org.uk

BURROUGH GREEN CofE PRIMARY SCHOOL

Is your child due to start in Reception in September 2023, born between 1st September 2018 and 31st August 2019?



Come and find out about the Early Years at Burrough Green

Burrough Green CofE Primary School have 2 open afternoon sessions; we would love to see you!

Wednesday 9th November at 2pm-3pm.

Please call the school office 01638 507236 to book your time slot. If you can't make either of these dates , please contact us to arrange an alternative time.

Burrough Green Primary School
Bradley Road : Burrough Green : CB8 9NH
01638 507236

www.burroughgreen.cambs.sch.uk

KNIT & NATTER

Every Monday from 1:30 to 3.30pm

In the Community Room at Sheriff's Court Burrough Green. All knitters or potential knitters are welcome, Bring your own knitting or we can teach you to make squares for the local neonatal unit or knit for other charities.



We have odd bits of wool, patterns and needles etc. There will be a small charge for refreshments.

Any donations of wool would be greatly appreciated.

ALL WELCOME

ELLESMERE GARDEN CLUB

Join us at 7.30 pm in the Ellesmere Centre on **Wednesday 9th November** for 'Baskets, Bangers and Booze' !

Bulbs, plants and compost will be available to purchase - you just need to bring your own container. The session will cost £2.50 to cover refreshments, which will include a veggie option. As well as wine there will be tea, coffee and biscuits and our usual raffle. There will be plenty of opportunity for socializing as well as enjoying the refreshments, with the result of a splendid addition for your garden!

Finally this year we have our Christmas Party on **Wednesday 14th December** at The Pantry in Newmarket. Judith will circulate the menu in advance with details of how and when to order and pay.

Do put these events in your diary, and we hope you can join us. Members and visitors are equally welcome to our meetings and events, and if you have any queries about the club, please contact either our Chairman Sandie, phone 07903 584676, or our Secretary Judith, phone 07740 100660.

~~~~~

**DULLINGHAM FLOWER CLUB**

**Thursday 10<sup>th</sup> November 2022**

**8pm**

The Taylor Hall, Dullingham. CB8 9XE

Come & join us for an entertaining evening with a demonstration by

**Julie Lloyd**

Entitled

**'One of a Kind'**

Admission £8 to include refreshments. Raffle

Please contact Lesley Bird

Tel: 01638 507658 or 07786 817154

Next Meeting - Thursday 8<sup>th</sup> December 2022

Demonstration by David Wright

~~~~~

RECYCLING

Carlton & Willingham Green - Mondays :

Black bin - 14th & 28th November.

Blue & Green - 7th & 21st November.

Brinkley, Burrough Green, Westley Waterless - Mondays

Black sacks weekly.

Blue Lid - 7th & 21st November.

Green Lid - 14th & 28th November.

Ink Cartridges *The Opportunity Group* which meets at the Ellesmere Centre would be very grateful for your old ink cartridges to help with fund raising. Please drop them in the box on the gate at White Hart Cottage, High Street Brinkley or in the box at the Ellesmere Centre. Thank you.

(The Opportunity Group provides one to one care for children with special needs and their siblings, also provides respite for their parents/guardians.)

~~~~~

**THE ELLESMERE DEVILS PANTOMIME SOCIETY**

**present**

**DICK WHITTINGTON**

Panto returns to Stetchworth - oh yes it does! Dick Whittington arrives in London to earn his fortune, where he believes the streets are paved with gold. His plans are scuppered by King Rat and his rat pack who create havoc. Will Dick, with the help of his side kick cat and wonderful Fairy Bow Bella, thwart King Rat and his evil plan to become Lord Mayor of London?

There will be all you expect from a Devils' performance; fantastic songs, brilliant choreography, sparkling sets, fun costumes and an amazingly talented cast of local performers.

Wednesday 1<sup>st</sup> February 6.30pm £8

Thursday 2<sup>nd</sup> February 7.30pm £9

Friday 3<sup>rd</sup> February 7.30pm £10

Saturday 4<sup>th</sup> February 2.00pm £9

7.30pm £10

Tickets are on sale now

at <http://www.ticketsource.co.uk/edps> or by calling 07990 513836. If anyone bought tickets for last year, these have automatically rolled over to the new dates this year and someone will be in touch with you soon.

~~~~~

DATE FOR YOUR DIARY

BRINKLEY MEMORIAL HALL

Friday, 3rd February, 2023

The Trustees are hosting a 'New Year Get Together Supper' with after dinner entertainment.

A 3-course supper to welcome in the new year, please put date in your diaries and come along and join us.

Further information to follow.

~~~~~

**VILLAGE WEBSITES**

[www.westleywaterless.com](http://www.westleywaterless.com)

[www.burroughgreenparishcouncil.org.uk](http://www.burroughgreenparishcouncil.org.uk)

[www.brinkleyparishcouncil.org.uk](http://www.brinkleyparishcouncil.org.uk)

Information on the facilities of each village and also back issues of Village Voice newsletter and the adverts.

~~~~~

BRINKLEY MEMORIAL HALL

The Trustees would like to announce that after the summer closure of the Memorial Hall due to urgent work to replace the entire floor, the Hall is now open for use.

The old boiler has also been replaced with a new efficient boiler, making the Hall a very pleasant environment for any classes/functions or events.

The cost for booking events or functions is £10/hr for residents and £12/hr for non-residents. Thank you for your patience.

~~~~~

**VILLAGE HALLS**

Brinkley, Burrough Green and Westley Waterless have excellent village halls, all beautifully refurbished over the last few years; and all available for hire at reasonable rates.

Information on their facilities and availability can be found by contacting them on:

**Brinkley Memorial Hall** - Contact: Susie Shuter on 01638 508729 : 07836 656643

**Burrough Green Reading Room** - Please contact Joanne Harrison on 01638 508888  
E mailing [bgreadingroom@yahoo.com](mailto:bgreadingroom@yahoo.com)  
[www.burroughgreenparishcouncil.org.uk](http://www.burroughgreenparishcouncil.org.uk)

**Westley Waterless Village Hall** - For more information please go to [www.westleywaterless.com/hall](http://www.westleywaterless.com/hall)

**THE PETER & RUTH LLOYD TRUST AWARD 2022**

We are pleased to report that this year the Trust presented its annual award for 2022 to Oliver Hodge. Oliver is from West Wrattling and has gone to the University of Hull to study medicine. Very well done! As always it was a pleasure for the trustees to meet such enthusiastic and interesting candidates from our locality during the selection process. Details of the 2023 award and how to apply, will feature next month.

Oliver was presented with his cheque by the trustees at the RAF Wrattling Common memorial stone.



Jonathan Drury - [peter.ruthlloydtrust@sky.com](mailto:peter.ruthlloydtrust@sky.com)

**THE BULL BURROUGH GREEN**

It is with deep regret, but also very many happy memories that Rob and I are leaving The Bull after several years of pulling pints and serving Sunday roasts.



We are proud to have served the vibrant community of Burrough Green and we are grateful for the friendship and loyalty of so many of you over the years. We must also pay tribute to our many friends and neighbours who have served behind the bar and in the kitchen and who have helped to make this pub such a friendly and convivial social hub. We feel privileged to have worked with you all.

We wish The Bull's new management every success in the future and hope that it will continue to serve and support this wonderful village for many years to come

Our last trading day will be Saturday 5th November.  
**01638 508333**

**WHAT'S ON AT THE RED LION BRINKLEY**

Check on Facebook  
**01638 508707**



**BALSHAM PICTURE HOUSE**

**Saturday November 12<sup>th</sup>**  
Doors open 7pm and film at 7.30  
in Balsham Church Institute  
**OPERATION MINCEMEAT (12)**

starring Colin Firth in the 2022 released film of the exercise to mislead the Germans of the Allies plan to land in Sicily.

In the context of WW2 narratives, the story of **Operation Mincemeat** is a unique blend of high-level espionage and ingenious fiction, where the stakes could hardly be higher. Michelle Ashford's script fuses multiple strands and moods: tense, romantic, thrilling, unexpectedly funny, and endlessly surprising. A richly human story of the soldiers we seldom see, who fight a different kind of war in shadows and deception, haunted by the knowledge that certainty and guarantee of success are nowhere to be found. Guest visitors £3/ ni and Annual membership just £12 for adults.

Dave's bar will be open for pre-show drinks and nibbles as normal.

**MOBILITY AIDS LOAN SERVICE**  
**CHRISTCHURCH METHODIST & URC**

15, St. Mary's Square,  
(next door to Five Bells)  
Newmarket, CB8 0HZ

Telephone No. 01638 666456

(Leave a message when out of hours)



**Opening Times**

**Tuesday 10.30 am - 12.30 pm**  
**Friday 10.30 am - 12.30 pm**

Equipment available to hire (and purchase)  
(returnable deposit)

Back Rests, Perching Stools, Bath Seats and Boards, Raised Toilet Seats, Bed Cradle, Shower Stools, Bed Over Table, Commodes, Walking Frames, Crutches, Walking Sticks, Leg Raisers/Leg Rests, Wheelchairs (Transit and Self-propelled, Seat sizes 13" to 22" ) etc!

ALL ITEMS ARE SUBJECT TO AVAILABILITY

**Volunteers took over from the Red Cross when it closed the Newmarket branch.**

**For further information contact Rachel Lewis  
07765 304013**

## COULD YOU BE A SCHOOL GOVERNOR?

Kettlefields Primary School is looking for additional members to join its Governing Body. The roles are voluntary, and the appointment is for a four-year term of office.

### *What does the Governing Body do?*

The Governing Body has responsibility for day-to-day governance within the school. Its key responsibilities are:

- to recommend the vision, ethos and strategic direction for their school.
- to ensure the vision, ethos and strategic direction of the school is implemented.
- to hold the headteacher to account for the educational and financial performance of the school.
- to ensure money is well spent.

### *Why become a school governor?*

You will work with other parents and local people who are committed to making Kettlefields Primary School the best school it can be.

You will share and apply skills and knowledge you already have and learn new ones.

You will have the opportunity to give back to the school and the community it serves.

More general information on what being a school governor entails can be found on the National Governors Association ([www.nga.org.uk](http://www.nga.org.uk)) website.

### *What are we looking for?*

While there are no special qualifications needed, we are keen to complement the skills/experience of the rest of the Governing Body membership. The most important thing is to have a keen interest in the school and education of the children it serves with a willingness to play an active part in the Governing Body's work.

Please note successful candidates will be required to undergo an enhanced Disclosure and Barring Service (DBS) check and to confirm their eligibility to serve as a school governor.

Further information: if you wish to ask any questions or discuss the nature of the role informally, please do not hesitate to get in touch.

[Clerk@kettlefields.cambs.sch.uk](mailto:Clerk@kettlefields.cambs.sch.uk)

## MARSH MAIL - News from Linton Village College

The school calendar has been rich with trips and visits over the last half term, taking learning outside the classroom and creating memorable educational opportunities.

Year 11 languages students spent the last week before the half term break submersed in French and Spanish speaking and culture as part of their residential excursions to Lyon and Benalmadena.

Students studying GCSE Geography took part in a field trip to Queen Elizabeth Olympic Park to examine the effects of regeneration in East London.

Almost 300 GCSE students experienced live theatre last month visiting Cambridge Arts Theatre to watch Stephen Daldry's award-winning production of 'An Inspector Calls' to bring their literature set text to life.

LVC students from Years 9-11 took part in an inter-school debating competition at the Cambridge Union, organised by MP Lucy Frazer. The event enabled them to develop their speaking skills and confidence.

Year 8 and 9 boys had the opportunity to take part in a contemporary dance workshop led by Sam Willmore, commercial choreographer and dancer.

On World Poetry Day, Year 8 students benefited from an online poetry writing workshop with poet and YouTuber Mark Grist.

We also hosted large numbers of primary school children for the Year 2 Cluster Music Festival at LVC. This month LVC students' artwork will be displayed within an exhibition entitled 'Platform 22' showcasing Anglian Learning student art at the Michaelhouse café gallery in Cambridge from 14<sup>th</sup>-27<sup>th</sup> November.

*Helena Marsh*

### LUCY FRAZER MP - End of Year Update

As we near the end of the year, I wanted to reflect on 2022 and let you know a few of the matters I have been working on, on your behalf.

This year has not, so far, been without its challenges - whether that is the spiralling energy costs or the war in Ukraine. We have also recently sadly mourned the death of our late Queen Elizabeth, who served us with grace and dignity throughout her reign. I was pleased to attend the proclamation both in Westminster and in Cambridgeshire to welcome King Charles III as our new monarch.

I know constituents across Cambridgeshire are concerned about the war in Ukraine. And I have been humbled by the response of so many families who have supported Ukrainian refugees. Many families across our area have opened their homes to those fleeing conflict, and I was pleased to hold an event in the summer to bring together some of the volunteers, organisations and families who have been involved in supporting those who have come to the UK.



Over the next decade, five new hospitals are set to be built across the East of England, including two new hospitals at Addenbrooke's which will specialise in children's care and cancer research. Alongside my neighbouring MP, Anthony Browne, I have recently written to the Government to reiterate my support for these two new specialist hospitals, and I look forward to these projects being given the green light to proceed to Full Business Case as soon as possible so that patients from across our region will be able to benefit from the life changing treatment and care these new facilities will be able to offer.

I know that cost of living is a real concern, and I am committed to helping constituents across South East Cambridgeshire find the support and advice they need. In my previous role as Financial Secretary to the Treasury, I was proud to work with ministerial colleagues to introduce a package of measures to help tackle the cost of living crisis. These included a £400 discount off energy bills. You may also have heard the recent announcement of a new Energy Price Guarantee which means that from 1st October, a typical household will pay no more than £2,500 for their energy bill for the next 2 years.

And locally, I have worked with local stakeholders to tackle speeding concerns. I was pleased to meet long-serving Special Constable, Thomas Howard who is responsible for carrying out speed checks and see for myself the speeding on the B1061. Earlier in the year I supported a bid by Burrough Green Parish Council to the County Council's Local Highways Improvement fund for a lower speed limit and buffer zone along the Burrough End section of the B1052. The bid was successful and whilst I am told there may be some delays in carrying out the work due to the pandemic, I am hopeful that the changes can be implemented very soon.

*I wish you all the best for the rest of the year. And, as always, if I can be of help or assistance, please email me on [lucy.frazer.mp@parliament.uk](mailto:lucy.frazer.mp@parliament.uk).*

~~~~~

DISTRICT COUCELLORS' REPORTS

Charlotte Cane East Cambs, Bottisham Ward.

Buses have been the main talking point for residents and politicians alike, since Stagecoach announced that despite taking Government money to sustain local bus routes still affected by the Covid passenger downturn, they were going to close large numbers of local routes anyway. These include the 11 & 12 services. With these services due to close on 30th October (all the notice Stagecoach have to give) the Mayor's Combined Authority—which is the public transport authority for Cambridgeshire & Peterborough—has launched a procurement with £1.7 million on offer to fill as many of the gaps as possible from the date on which Stagecoach leaves them until the end of March 2023.

The Combined Authority Board will meet on Wednesday 19th October, when it will reach a decision on the outcome of the procurement. The County Council's Strategy and Resources Committee will meet on the 20th October where they can consider providing additional financial support if the Combined Authority's funding is insufficient. It is understood that there is a company who wants to run buses on the number 12 route, and we wait to see if a company has tendered for the number 11 route. Beyond March 2023, the Combined Authority will be making decisions on bus services as part of its annual budget and business planning process.

The actions of Stagecoach have shown that the current system—in place since the mid 1980s — where commercial operators compete for money-making routes, leaving local authorities to fund the loss-making but socially necessary routes, is unsustainable. So, we hope the Combined Authority moves forward quickly with proposals to develop a reliable public transport network for Cambridgeshire. Ideally this would include franchising of bus routes, where profitable and unprofitable routes are bundled together to avoid the current cherry-picking.

On Monday 17th October the Greater Cambridge Partnership Board will launch the public consultation on its proposals for significant bus expansion over the next four years, paid for by a charge on driving in Cambridge from 2027. A set of exemptions, discounts, and refunds is also proposed in a number of circumstances. We will give details of the consultation in our next Newsletter, or you can check <https://www.greatercambridge.org.uk/get-involved/consultations-on-consulcamb>s from Monday. The consultation closes on 23rd December.

The cost-of-living crisis seems to get worse, rather than better. Gas and Electricity prices have been capped but we await details of the promised help for those of us on oil, lpg etc. Food prices keep going up and mortgages and rent are increasing. The County Council is collating information about the various sources of help for individuals and households struggling with the cost-of-living crisis. <https://www.cambridgeshire.gov.uk/council/communities-localism/support-with-the-cost-of-living>

We know not everyone has access to on-line information and recommend that they contact Newmarket Citizens' Advice Bureau (CAB) on 0808 278 7868, Cambridge CAB on 0808 278 7808 or East Cambs Housing and Community Advice Service on 01353 665555.

Our next Councillors' Surgery is on Wednesday 23rd November 6.30-7.30pm at Swaffham Prior Village Hall.

~~~~~

**EAST CAMBS DISTRICT COUNCIL**  
**CAMBRIDGESHIRE COUNTY COUNCIL REPORT**

I have delayed writing this report as late as I can to get it published, but so it includes the most up to date information, so writing this on 16<sup>th</sup> October by the time that residents read this report, some of the things mentioned will have changed

**Bus Services**

The major topic of conversation has been the withdrawal of 18 routes by Stagecoach across Cambridgeshire, which affects the route numbers 11 and 12 locally that run through Newmarket and is due to happen on 30<sup>th</sup> October.

Stagecoach is losing substantial money on those 18 routes, about £4.7m per year and have been for several years, but those losses have been subsidised by the more profitable routes, so this is a commercial decision.

The mayor of the Cambridgeshire & Peterborough Combined Authority (CPCA) is the Transport Authority for Cambridgeshire, and the current mayor came into office in May 2021 with the promise of improving the bus services across the County.

However, earlier this year, the mayor failed in his bid to Government for funding for improved bus services within the County as the Government viewed his application was not ambitious enough. As an example, Norfolk County Council received £49.5m. Little has been progressed on buses in the last 18 months and I am vice-chair of the Overview & Scrutiny Committee of the CPCA, which scrutinises the mayor and we have seen no plan.

I have lobbied Highways & Transport Committee members on Cambridgeshire County Council (CCC) who did respond, but with no real help, and lobbied the Chair of the Greater Cambridge Partnership (GCP), but with not even the courtesy of a response in respect of the ceasing of the 2 routes affecting my residents.

I have attended meetings with the A2B 1102 Group, which is a pressure group representing the Burwell to Quy corridor and with Newmarket Town Council and Suffolk colleagues to discuss what we can do on this situation.

The CPCA has re-tendered the routes that are being withdrawn and the results of that tender exercise will be known on Wednesday 19<sup>th</sup> October and has offered £1.7m from unspent reserves to keep the services running in the short-term, but the bigger issue is the long-term where funding by the CPCA may not be available.

On 30<sup>th</sup> September, the Conservative Group on the Strategy & Resources Committee, which is the major decision-making committee at the County Council and which I am a member of, made a proposal for the CCC

to match the sum of £1.7m that the mayor was promising and ask the Greater Cambridge Partnership (GCP) to put in the same. This would have made £5.1m to save these services in the short-term, but the Lib-Dem ruling group on CCC rejected our proposal.

Our group were looking to get a short-term fix to preserve the services, whilst allowing a longer time to get a long-term solution, so residents had some reassurance.

There is a meeting of Strategy & Resources on 20<sup>th</sup> October, where the decision not to fund the shortfall may be re-considered depending on the outcome of the re-tender exercise.

This decision affects a considerable number of people, as I know from my role as Co-Chair of Governors at Bottisham Village College and the effect these closures could have on students, staff and parents getting to the College for out of catchment children. I will keep pushing for the best service for residents and am very frustrated at the inaction of the CPCA and CCC.

That is democracy, but I came into local politics to get things done for residents and being the opposition on CCC means that we can only put valid and consistent arguments forward and hope that the ruling Lib Dem controlled administration accepts those arguments. It can be very frustrating.

**Congestion Charging**

The Greater Cambridge Partnership (GCP) have agreed to consult on implementing a £5 congestion charge between 7am and 7pm on weekdays across the Greater Cambridge area, which would include Addenbrookes.

The GCP stated that there would be an efficient bus service costing £60m a year to run in Cambridge and the surrounding areas.

The service would be funded by the Congestion Charge and fares, which will be low. There is no financial detail and I have great doubts as to how the figures will stack up.

The consultation commenced on 17<sup>th</sup> October and will run until 23<sup>rd</sup> December, and I would ask residents to get involved and give your thoughts. Any final decision will need to be agreed by a Full Cambridgeshire County Council, which knowing the opposition to this, is by no means guaranteed.

The GCP is an unelected body that allows no democratic challenge on behalf of East Cambs residents, and I will continue to challenge and lobby for my residents to get the best possible transport service in our area.

**Transport & Highways Issues**

The county of Cambridgeshire currently has 3 organisations that are responsible for transport within the county, namely the CPCA, GCP and CCC. None of these 3 organisations have a clear vision of

the transport system that would provide the benefit for most residents.

There are many issues around transport, whether that be better buses, or even a bus, rail, car and the move to greener cars and electric and the cost both to the public purse and the passenger.

The pandemic changed the way that people travel and whilst a lot of people have returned to their normal commute, many elderly residents have not returned to bus travel, and they are the passengers who filled the buses during the day.

#### Traffic

The roadworks on the A14 have caused large delays along the stretch that goes past Newmarket. These delays have resulted in large delays through Newmarket and increased traffic through all the villages that I represent south of Newmarket certainly from Ashley across to Dullingham, as vehicles of all types try to avoid the delays.

I would welcome any comment from residents on their thoughts on these issues.

**I am elected to represent residents and I will continue to do that to the best of my ability, but if there is anything that concerns you, please contact me and I will try to fix it.**

**If any resident wants to meet me or call to discuss a particular issue, then please feel free to contact me. I want to hear comments from everyone, as that is the only way that I can truly represent you.**

*Alan Sharp Cambridgeshire County Councillor - Woodditton Division*

*East Cambs District Councillor - Woodditton Ward*

Tel: 01638 507485/ 07794292941

E-Mail: [Alan.sharp@cambridgeshire.gov.uk](mailto:Alan.sharp@cambridgeshire.gov.uk)

[Alan.sharp@eastcambs.gov.uk](mailto:Alan.sharp@eastcambs.gov.uk)

~~~~~  
ECDC NEWSLETTER

Warm hubs to be set up across district

Specialist Warm Hubs will be operated from community buildings across East Cambridgeshire to support vulnerable and isolated people, as well as those on lower incomes this winter.

See information on the front page

BURRROUGH GREEN READING ROOM

Help with cost of living a click away

New Cost of Living pages on our website are jam-packed with suggestions and ideas on where to get help this winter. Specifically they include advice on:

Government payments that help with the cost of living, for example, the one-off £650 'cost of living' payment to low-income households on Universal Credit, Tax Credits, Pension Credit and legacy benefits and a separate one-off payment of £300 to pensioner households.

Charities and Support schemes, such as Cambridgeshire's Local Assistance Scheme (CLAS)

which supports people facing unexpected financial difficulties. CLAS can provide information, advice and practical support and assistance in times of exceptional pressure.

Support with energy costs. There are various grant schemes available to residents of East Cambs to increase the energy efficiency of your home, helping to bring down energy costs in the longer term. Visit our home energy efficiency grants webpage for more details.

Help with food costs. The Cambridgeshire Household Support Fund has been created to help people experiencing immediate financial hardship to pay for food and household energy bills. Ely Foodbank also operates six centres in the East Cambs district, distributing emergency food parcels and other assistance.

Community groups such as The Baby Bank in Fordham, which collects baby goods to distribute to those in need, and Laptops4Learning, which supplies reconditioned laptops for educational purposes are just two organisations helping to lower costs for people locally.

Staying Healthy. The Council funds and partners with Healthy You, which offers a number of different health services to residents in East Cambs. These include programmes to stop smoking, boost your physical activity, eat more healthily, manage weight, prevent falls, and reduce alcohol consumption. We also work closely with the Vaccinators on Tour to assist people in getting COVID vaccinations and boosters.

Debt and money advice. At East Cambs District Council we offer advice at our weekday drop-in sessions at the council offices Monday to Friday 10:00am to 4:00pm.

You can call us for advice on 01353 665555 or to book an appointment. Go to www.eastcambs.gov.uk

~~~~~  
**ST. PETER'S CHURCH STETCHWORTH  
CHRISTMAS TREE FESTIVAL**



**Saturday 10<sup>th</sup> December 2022  
2.00 - 5.00 pm**

Musical entertainment by the Kettlefields Choir  
and The Kitchen choir  
Come and see the Christmas Trees  
that have been decorated by Community Groups  
Mulled Wine and Mince Pies

**Raffle and Christmas Goodies**

~~~~~


RADDESLEY BENEFICE WEBSITE

On the website you can find out more about our churches, services, what's on and useful information about baptisms, funerals and weddings; www.raddesley.com

INTERIM PRIESTS:

Rev'ds Rosemary and Andrew Rycraft
19 Cardigan Street, Newmarket, CB8 8HZ
01638 665421

CHURCHWARDENS:

Burrough Green: Lucy Talbot Tel: 01638 507060, email: peterandlucyt@btinternet.com

Westley Waterless: Ms. Deborah O'Riordan, Tel: 01638 507741, email d.a.oriordan@btinternet.com and Mrs Liz Gibson, Tel: 01638 508600, lizgibson@me.com

Brinkley: Ros Pates 01638 507240
rospates@yahoo.co.uk

Carlton: Stephen Roberts 01223 290372 or Stephen.roberts28@btopenworld.com.

ALL SOULS SERVICE



Sunday 6 November at 6pm

We would like to invite you to our All-Souls Service at Westley Waterless Church. During the service, we will remember all those whom we have lost but remain in our thoughts and prayers by reading out their names and lighting a candle in their memory.

If you are unable to attend but would like the name of your loved one read out during the service, then please fill out the sheet in any of our Churches or let your Churchwarden know.

~~~~~

**R.A.F. WRATTING COMMON**



**REMEMBRANCE SUNDAY  
13<sup>th</sup> NOVEMBER**

There will be a short Service at the Memorial on Sunday 13<sup>th</sup> November 2022 at 12 noon.

The Memorial is situated at Weston Woods Farm, Weston Colville, CB21 5NR. We hope to be joined by some of the Veterans who served with XC Squadron, 1651 Heavy Conversion Unit and 195 Squadron. Also, Cadets from 1451 (Haverhill) Squadron of the Air Training Corps will be on parade.

Wreaths will be laid in memory of all those who served here and throughout the world, especially those who gave their lives in the cause of freedom. Attendees are invited to lay wreaths or crosses for those they wish to remember, and anyone is welcome to attend.

**WE WILL REMEMBER THEM.**

*Dan Heath. for Friends of Wrattling Common*

*Email [rafwrattlingcommon@gmail.com](mailto:rafwrattlingcommon@gmail.com)*

*Tel. Mob: 07736 737 174 ..Home: 01440 730 192*

We are always pleased to hear from anyone interested in getting involved with the Airfield Memorial. With just two services per year to arrange, as well as year-round general maintenance, this is not an onerous project to assist with but is very rewarding. It is hoped that, with the continued support of people in the locality, this important memorial to our community's war effort will survive for many generations.

~~~~~

b f b
ELECTRICAL SERVICES

Nat Higginbotham
07969113908

bfbelectricalservices@outlook.com



**RADDESLEY BENEFICE SERVICES FOR
NOVEMBER - ALL WELCOME**


Sunday 6th November 3rd Sunday before Advent

9.00 am Holy Communion Brinkley
Rev'd Rosemary Rycraft Anthea Kenna preaching
10.30 am Family Worship Burrough Green
Anthea Kenna
6.00 pm All Souls' Memorial Service Westley
Waterless
Rev'ds Andrew and Rosemary Rycraft

Jonah 3: 1-5, 10 Hebrews 9: 24-end Mark 1: 14-20

SUNDAY 13TH NOVEMBER REMEMBRANCE DAY

Remembrance Day services as follows

 10.55 am Dullingham
Rev'd Rosemary Rycraft
10.55 am Burrough Green
Rev'd Andrew Rycraft
3.00 pm Carlton
Rev'd Rosemary Rycraft

Sunday 20th November Christ the King

9.00 am Holy Communion Burrough Green
Rev'd Dr. Colin McCarty
10.30 am Morning Prayer Brinkley
Rev'd Dr. Colin McCarty

Jeremiah 23: 1-6 Colossians 1: 11-20 Luke 23: 33-43

Sunday 27th November Advent Sunday

10.30 am Holy Communion Dullingham
Rev'd Andrew Rycraft
Anthea Kenna preaching
3.00 pm Evening Prayer Stetchworth
Rev'd Rosemary Rycraft

Isaiah 2: 1-5 Romans 13: 11-end Matthew 24: 36-44

Dear all
November - a lot of people find it a depressing month
- you may know the poem by Thomas Hood titled

'November'
No sun - no moon! -
No morn - no noon
No dawn - no dusk - no proper time of day.
No warmth, no cheerfulness, no healthful ease,
No comfortable feel in any member -
No shade, no shine, no butterflies, no bees,
No fruits, no flowers, no leaves, no birds! -
November!

However, I have never had negative thoughts about the month - it is my birthday month and when I was a child one of my presents was usually a box of fireworks - another plus for the month - Bonfire night. Later I married during November, so our wedding anniversary falls during the month. The weather is often damp and foggy in November, moving to crisp cold December - but with the weather still so warm this year during the day towards the end of October, who knows what we can expect!

For many people of course it is a month for remembering, particularly on 11th and at Remembrance Day services, remembering friends and relatives who went away to war and did not return and these days, so long after the second world war, we are probably remembering those who did return from the war but who have since been lost to us.

When we get to the end of the month of course we have Advent Sunday when we start to look forward instead of backwards - forward to the birth of the expected Messiah and with that for most people come all the Christmas preparations.

This year with the steep rise in the cost of fuel, food and just about everything, I think there must be people who will be anxious as to whether they can get through the winter without going into debt just to keep warm and fed and will find it hard to view the Christmas season with as much pleasure as usual but I hope that some of the real meaning of advent and Christmas will shine through.

Lily Wymer

**ARTICLES FOR DECEMBER
VILLAGE VOICE**

To
villagevoicenewsletter@btinternet.com

01638 507495
by 21ST November 2022 please

~~~~~